

OLD POSTAL ROUTE - DISCOVERY TOUR

315km of moderate off-road riding via the legendary Old Postal Route, Wupperthal, the Zoo Ridge trail, and the Katbakkies Pass.



Number of participants Minimum 2 / Maximum 4 riders + guide

Dates Dates on request
or visit http://endurafrica.co.za/dates_sub-menu.html

Timetable	DAY 1		DAY 2	DAY 3		DAY 4	
	08:00-12:30	12:30-15:30	07:30-16:00	08:00-15.00	15:00...	09:00-12:00	12:00-17:00
Endurafrica's bakkie		Bellville - BxC	BxC - Old Postal Route - Wupperthal - Oasis	Zoo Ridge - Katbakkies Pass	Bike X Cape	BxC- Bellville	
Private car		Home - BxC			Depending on options		



Karretjies Pass (Old Postal Route)



Doring River (Old Postal Route)

Philosophy

This discovery tour is intended to people with limited off-road experience, wishing to experience an unique adventure in a relaxed atmosphere, at slow pace, and is in no way to be understood as a hardcore enduro tour.

Day 1 (afternoon) Bellville - Bike X Cape (by car)

Distance 210km (via N1 - Du Toit's Kloof tunnel - Ceres - R46 - R355)

Departure 12:30 from Bellville, or meeting around 15:30 at Bike X Cape

Food Supper (braai)

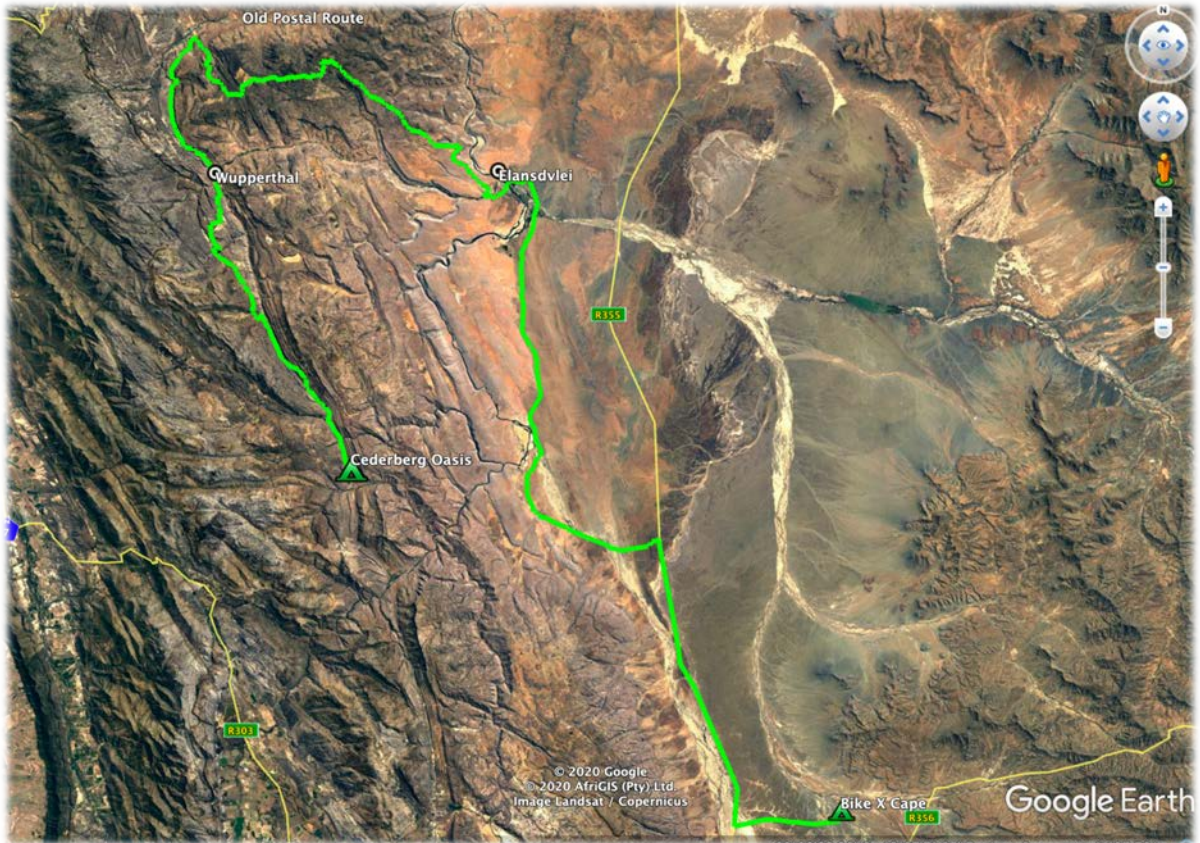
Accommodation Individual tents

Coordinates Bike X Cape: S32° 51' 53.9" E19° 53' 19.0"



Day 2

Elandsvlei farm - Old Postal Route - Wupperthal - Cederberg Oasis



Distance Bike X Cape - Elandsvlei: 84km
 Old Postal Route - Wupperthal: 80km } Total: 206km
 Wupperthal - Ceberberg Oasis: 42km

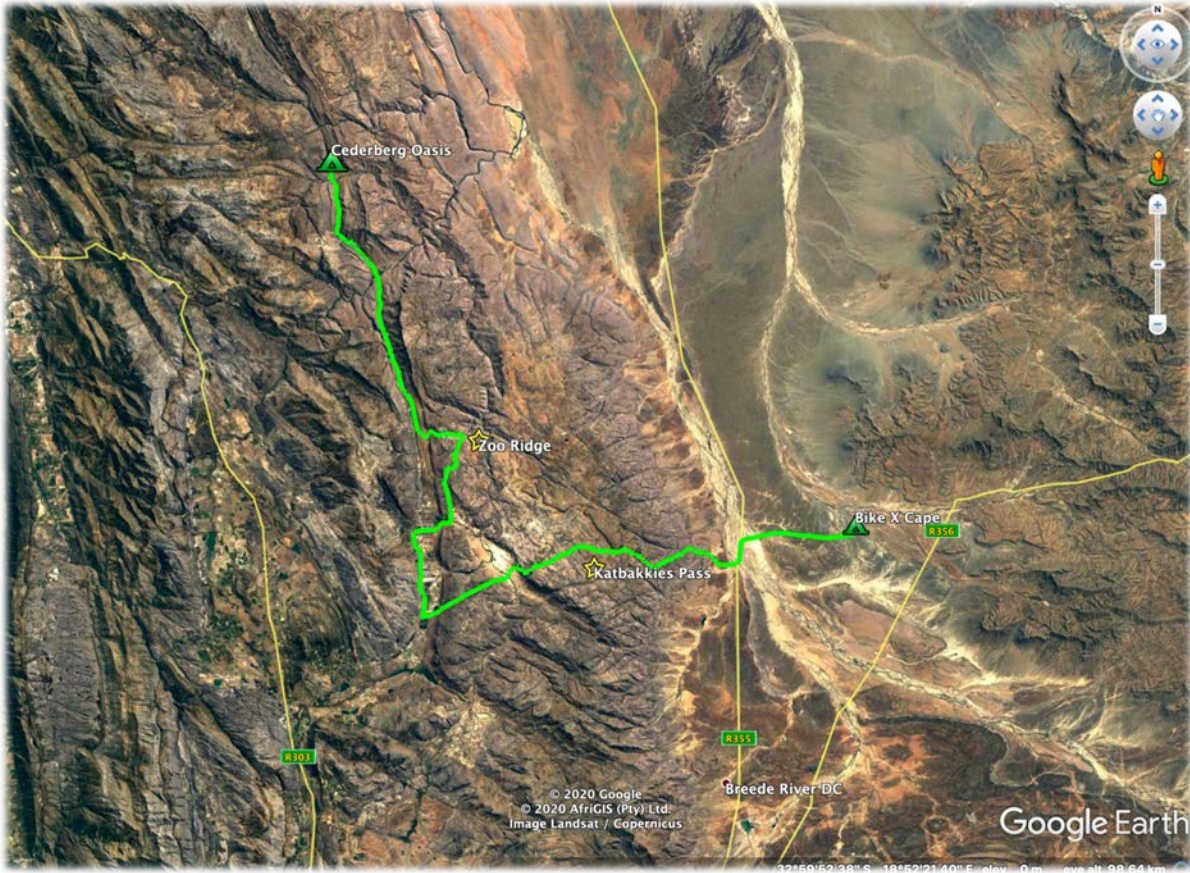
Difficulty Bike X Cape - Elandsvlei: Grade 1 (R355)
 Old Postal Route - Wupperthal: Up to grade 3
 Wupperthal - Ceberberg Oasis: Grade 2

Terrain Loose rocks, sand, gravel, up/downhill, river crossings

Food Breakfast: Bike X Cape
 Lunch: On-the-go snacks
 Supper: Cederberg Oasis, à la carte

Accommodation Individual tents

Coordinates Elandsvlei Farm: S29° 07' 31.7" E19° 23' 52.8"
 Wupperthal: S32° 16' 34.4" E19° 13' 01.7"
 Cederberg Oasis: S32° 33' 53.1" E19° 21' 49.3"

Day 3**Zoo Ridge trail - Katbakkies Pass - Bike X Cape**

Distance Oasis - End Zoo Ridge trail: 57km
 End Zoo Ridge trail - Bike X Cape: 49km } Total: 106km

Difficulty Zoo Ridge trail: Up to grade 3
 Oasis Junction - Bike X Cape: Grade 1-2

Terrain Loose rocks, sand, up/downhill, gravel

Food Breakfast: Cederberg Oasis, à la carte
 Lunch: On-the-go snacks
 Supper: Bike X Cape (braai)

Coordinates Katbakkies Pass: S32° 53' 34.7" E19° 33' 57.8"

Participants who came to Bike X Cape with their own car may want to leave at the end of the 3rd day (from around 16:00).

Day 4 (morning)**Bike X Cape - Bellville (with endurafrica's bakkie)**

Departure from Bike X Cape: 09:30 | Arrival in Bellville: around 12:30

Logistics

Repair equipment and 5L Desert Fox petrol bags to be shared between the bikes (max. 6kg).
Bike can be refueled at Cederberg Oasis.

In addition, and considering the distance to be covered and the bike's small tank capacity, the endurafrica's bakkie (driven by a member of Bike X Cape's staff) will follow the bikes from the camp to the Elandsvlei farm, in order to refuel the bikes before starting the Old Postal Route. There is no backup vehicle during the tour, in that manner lunches are taken on-the-go (snacks).

Costs

OPTION 1 Full package

The price includes rental bike, petrol, guide, 3 nights at tented camps, 3 suppers & 3 breakfasts, travel to/from Bike X Cape (from Bellville)	From R7'500.00
--	-----------------------

OPTION 2 Full package, however you travel on your own to/from Bike X Cape

The price includes rental bike, petrol, guide, 3 nights at tented camps, 3 suppers & 3 breakfasts	From R7'100.00
---	-----------------------

OPTION 3 You travel to/from Bike X Cape on your own and bring your own motorbike

The price includes petrol, guide, 3 nights at tented camps, 3 suppers & 3 breakfasts	From R4'600.00
--	-----------------------

OPTION 4 You travel to/from Bike X Cape on your own, bring your own motorbike and leave on the 3rd day afternoon

The price includes petrol, guide, 2 nights at tented camps, 2 suppers & 2 breakfasts	From R4'300.00
--	-----------------------

Rental apparel on request: Helmet | Goggles | Neck brace | Boots | Jacket | Pants |
Waterproof bag | Camel Pak

Drinks and on-the-go snacks not included.

Customized arrangements on request, e.g. additional training day.

Personal gear

Due to the limited available space on the small off-road bikes, the personal gear for the evening at Cederberg Oasis MUST be packed in the personal backpacks (in addition to the water pouch and snacks) and limited to the strict minimum, e.g.:

- Down Jacket or equivalent
- Pair of Flip Flops
- Spare T-Shirt
- Microfiber towel

Additional clothes can be stored at Bike X Cape for the duration of the tour.



Eselbank



Zoo Ridge

Insurance

We strongly recommend you to contract a repatriation insurance, covering emergency medical expenses and evacuation (helicopter rescue).

Please verify that your liability insurance covers the excess amount (R7'500) in case of damages or loss if you wish to rent one of our motorbikes.

Rental bikes

Our rental bike fleet includes small displacement dual sport motorbikes, e.g. Honda CRF250L and Beta Alp 4.0. Bike's damages not considered as wear (e.g. levers, radiators, handlebars, grips, etc...) are charged at real costs.




Safety

Our guides are First Aid qualified, and carry on board both a basic first aid kit and a satellite phone (In-Reach) connected to the GEOS emergency services.

Bookings

info@endurafrica.co.za

 WhatsApp Business +27 761651789

Tankwa Karoo wildlife we may encounter during the tour



Great Oryx



Meercat



Springbok



Jackal



Ostrich



Klipspringer